



1st DIVISION



2nd DIVISION

technical specification

13



DETAILS

There are particular aspects of waterproofing applications such as reliefs, joints, sills, etc. which require careful planning and professional expertise.

These particular points, if neglected, could endanger the whole roofing application.

Even though polymer-bitumen membranes are extremely adaptable and can be shaped and adjusted in the most difficult areas, without having to resort to prefabricated elements, these jobs require maximum attention.

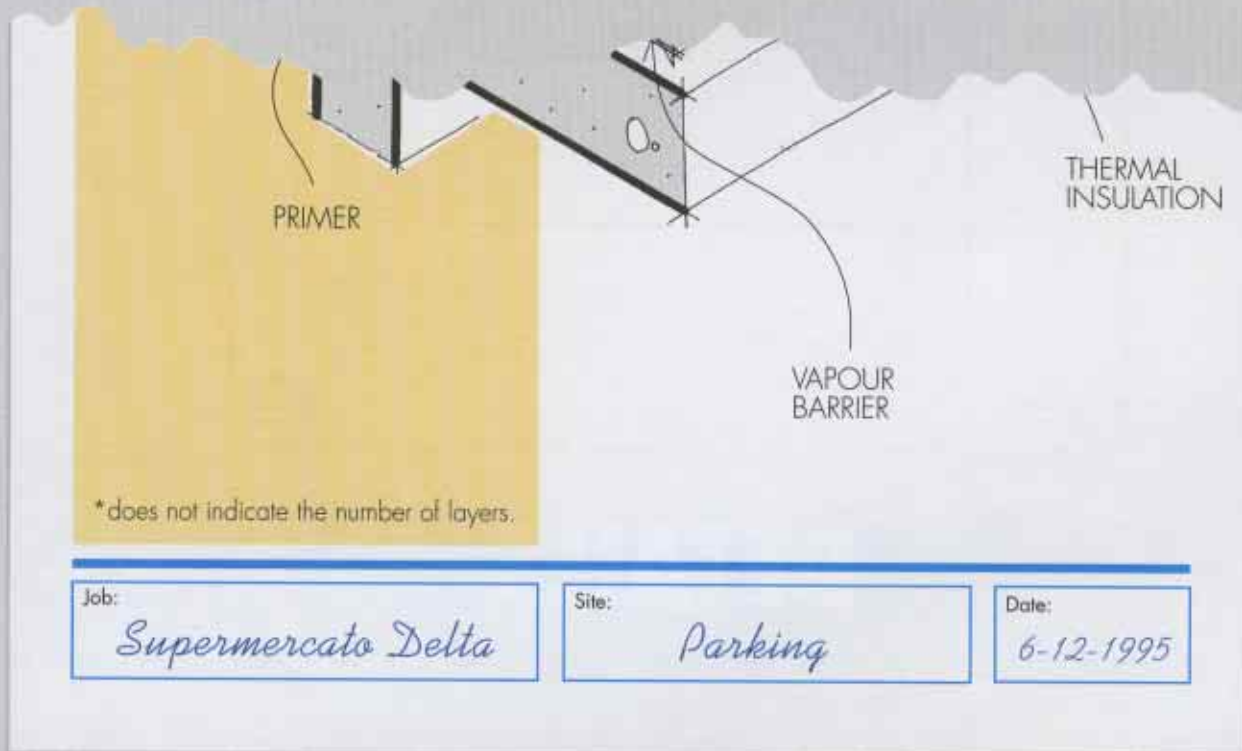
This publication examines these points with particular regard to design and planning in order to highlight the technical requirements and overcome problems which could affect installation and will prolong the life of the waterproofing layer and facilitate application.

complete systems **index**»»»

This collection of drawings, which has been conceived as a practical tool for immediate use, is based upon practical experience and should be used in conjunction with other Index technical literature.

The attached sheets may in fact be photocopied and personalised with project reference data.

These drawings may be used by the specifier to complete the Technical Specification and by the contractor to assess material requirements when carrying out the final waterproofing application.

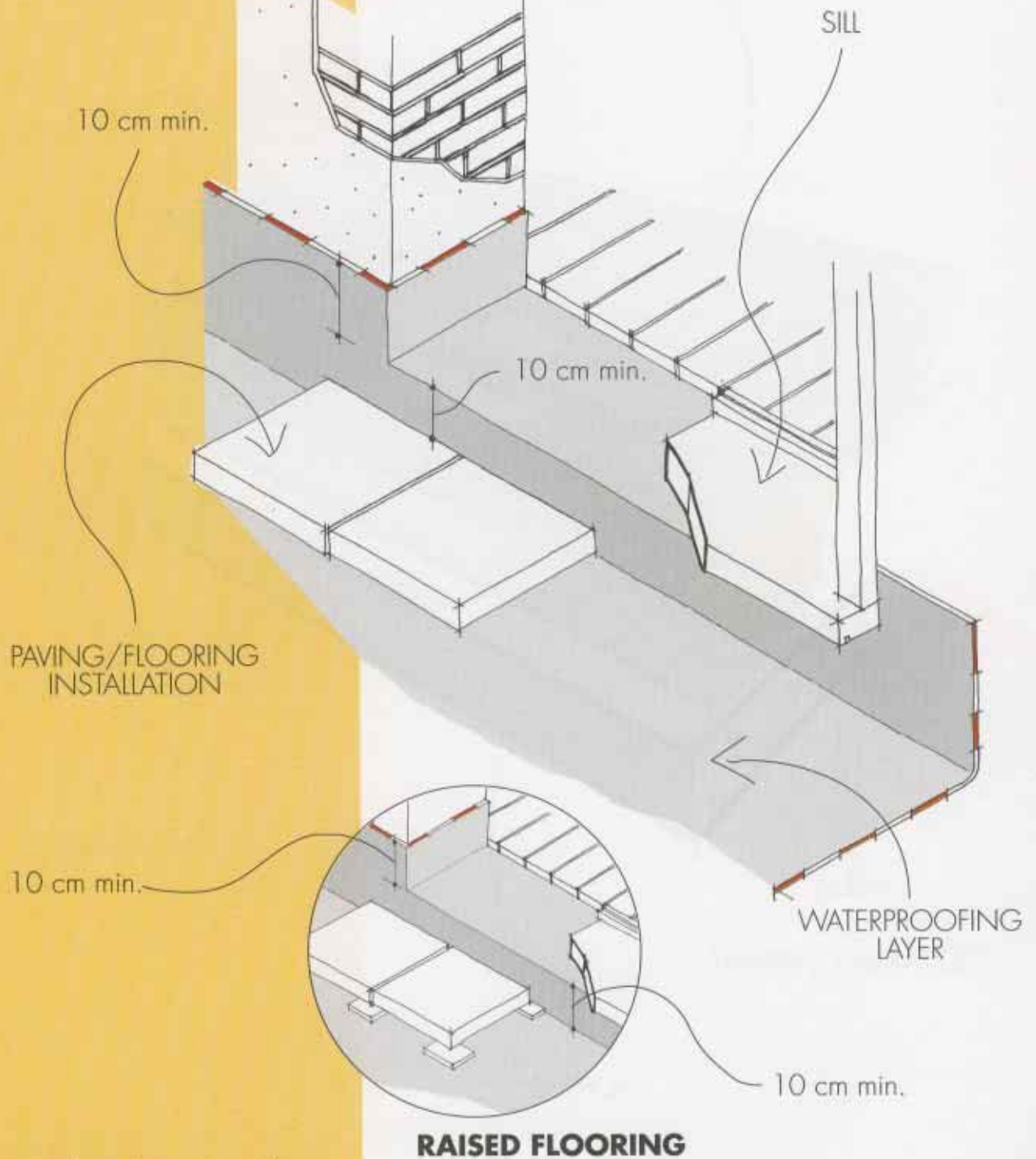


INDEX

- 1 Sill with flooring installation
Sill with raised flooring
- 2 Outlet with thermal insulation
- 3 Outlet without thermal insulation
- 4 Outlet with thermal insulation
- 5 Upstand detail with metal flashing
- 6 Upstand detail with metal flashing
and raised paving
- 7 Upstand detail with drainage channel
and metal flashing
- 8 Upstand detail at insulated
wall with metal flashing
- 9 Flat expansion joint with weathering membrane
- 10 Raised expansion joint with weathering membrane
- 11 Flat expansion joint with flooring
- 12 Expansion joint at upstand



FLOORING INSTALLATION

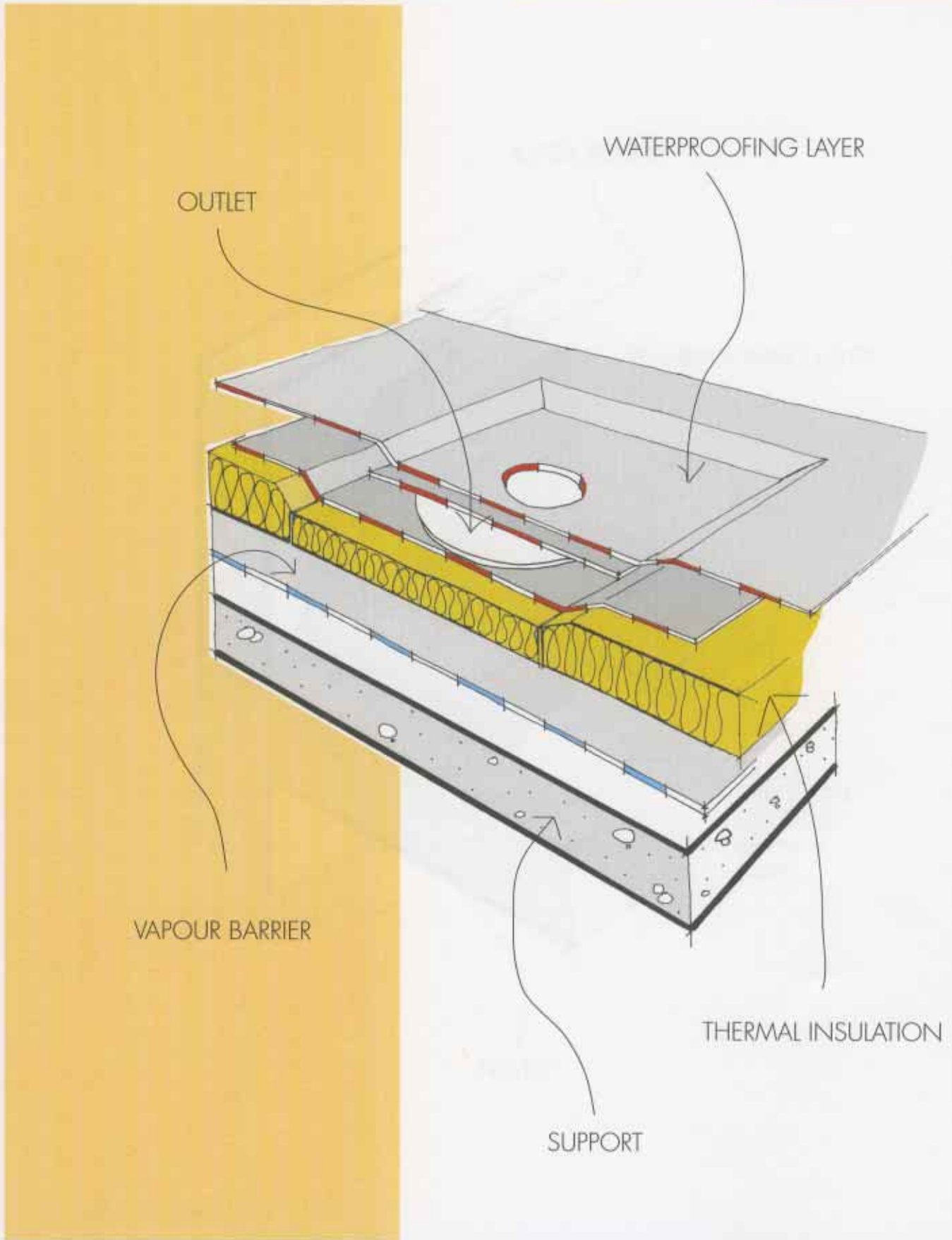


*does not indicate the number of layers.

Job:

Site:

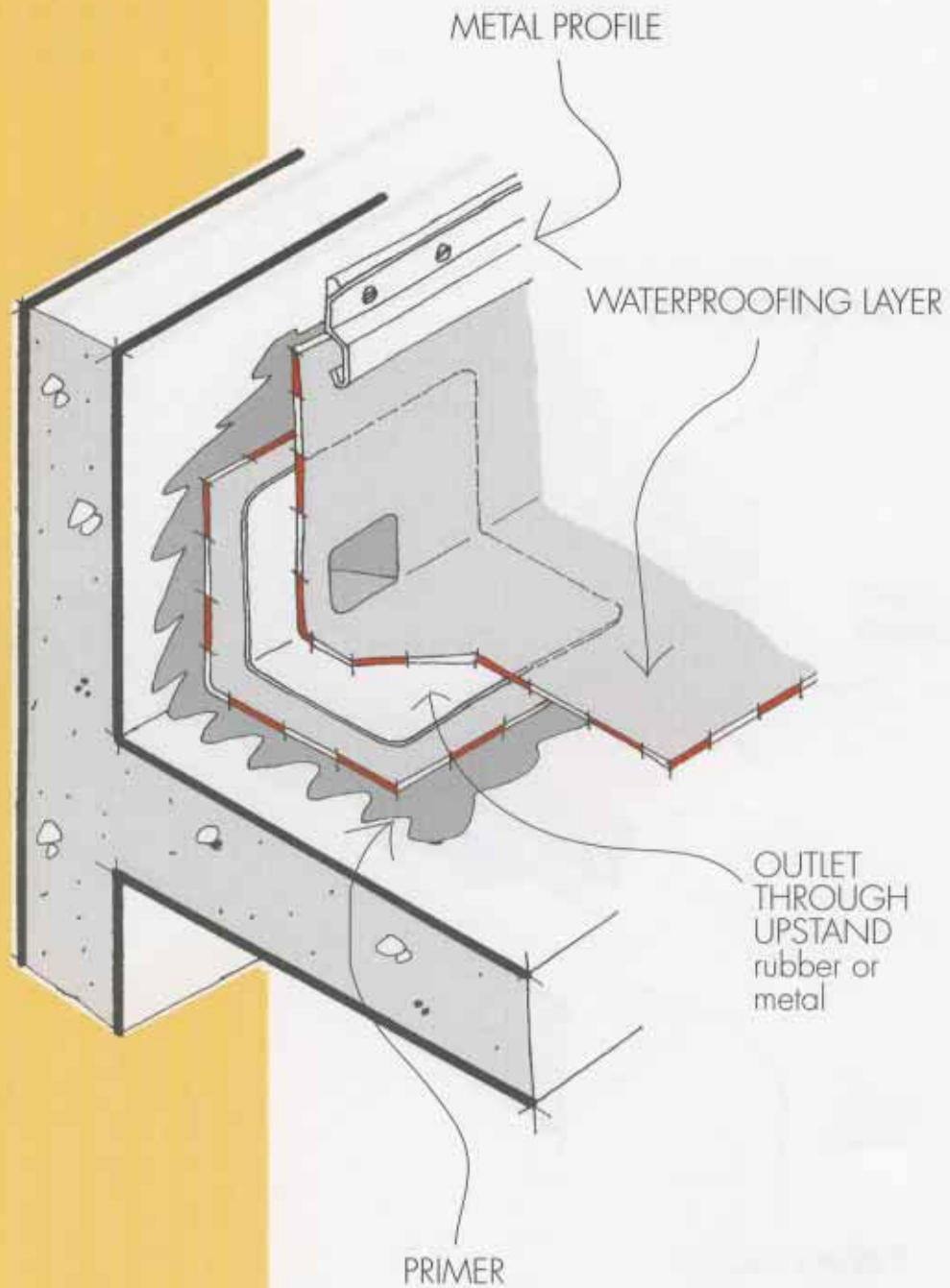
Date:



Job:

Site:

Date:



*does not indicate the number of layers.

Job:

Site:

Date:



OUTLET
THROUGH UPSTAND
rubber or metal

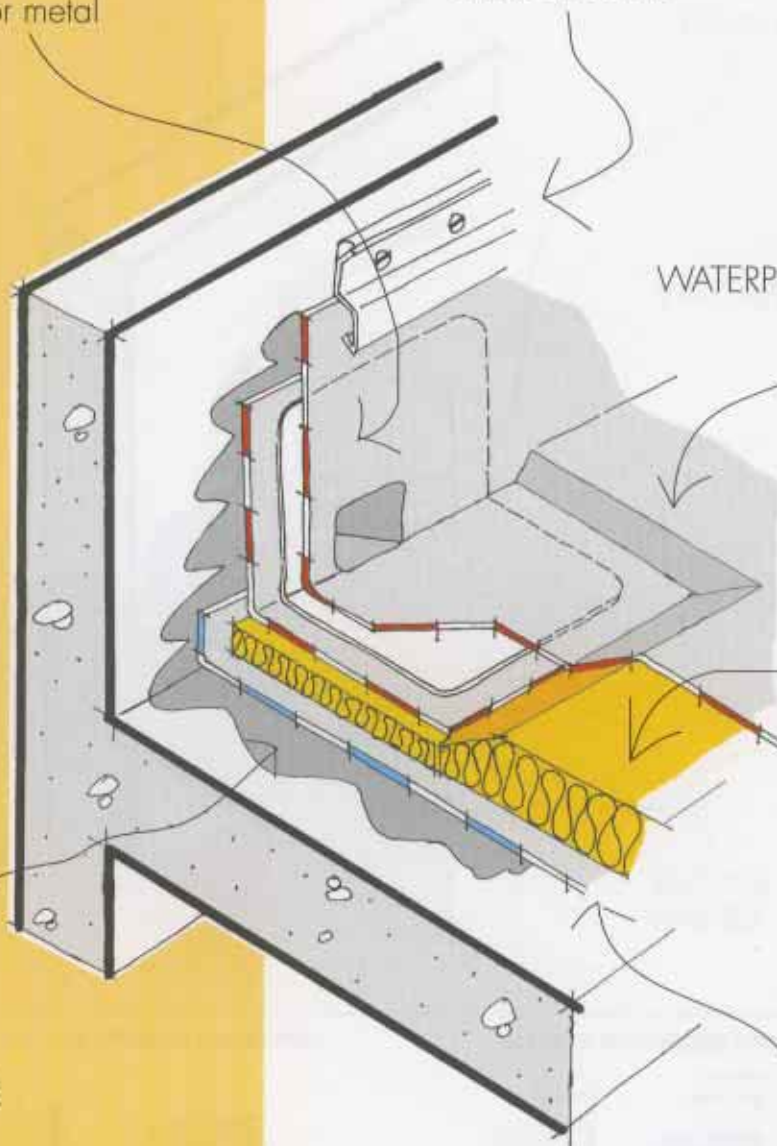
METAL PROFILE

WATERPROOFING LAYER

THERMAL
INSULATION

PRIMER

VAPOUR BARRIER

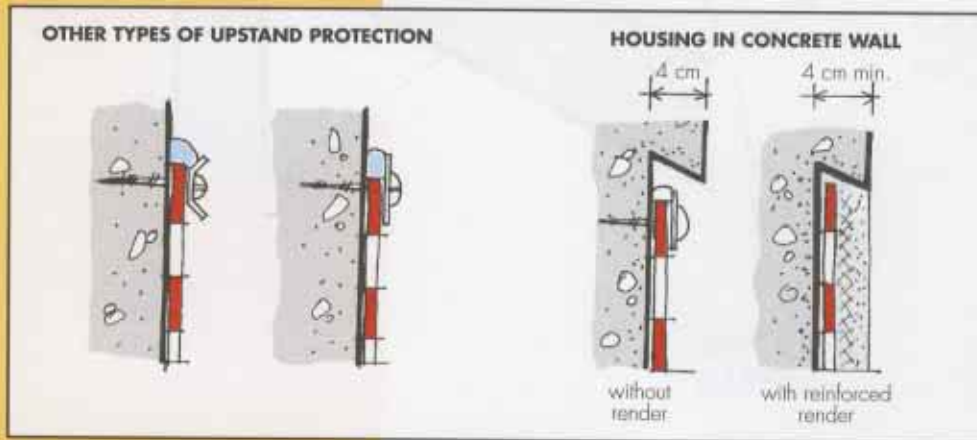
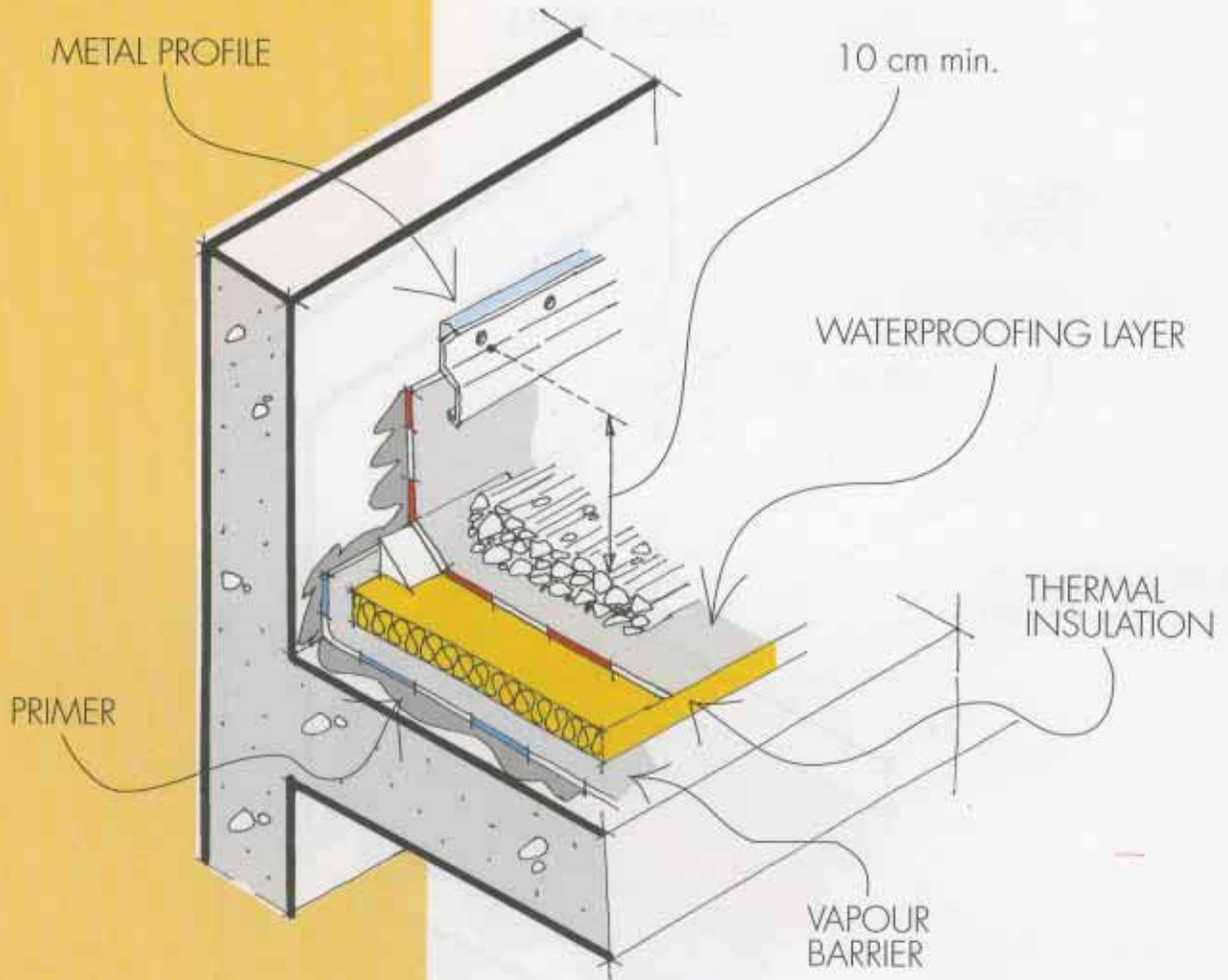


*does not indicate the number of layers.

Job:

Site:

Date:

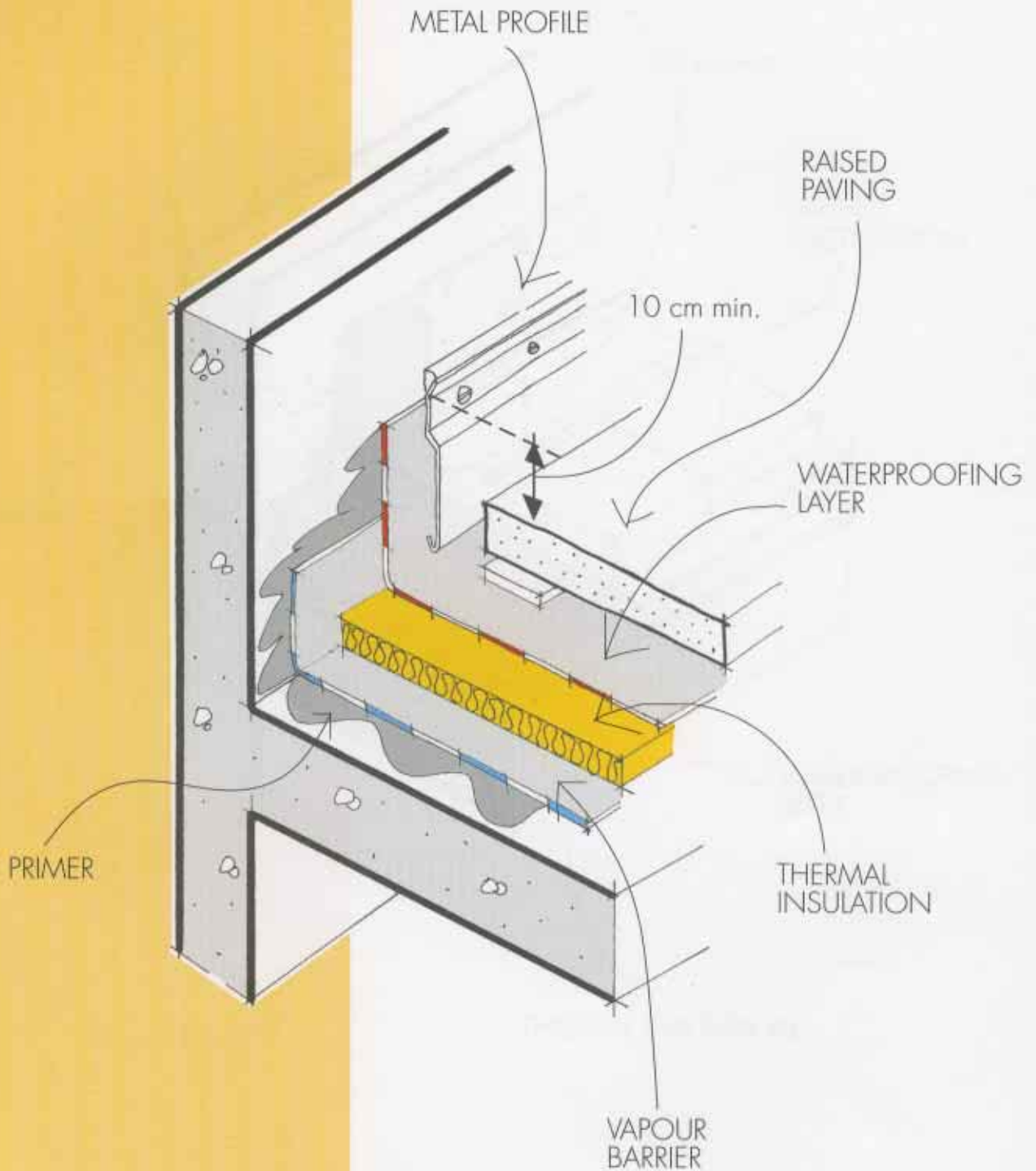


*does not indicate the number of layers.

Job:

Site:

Date:

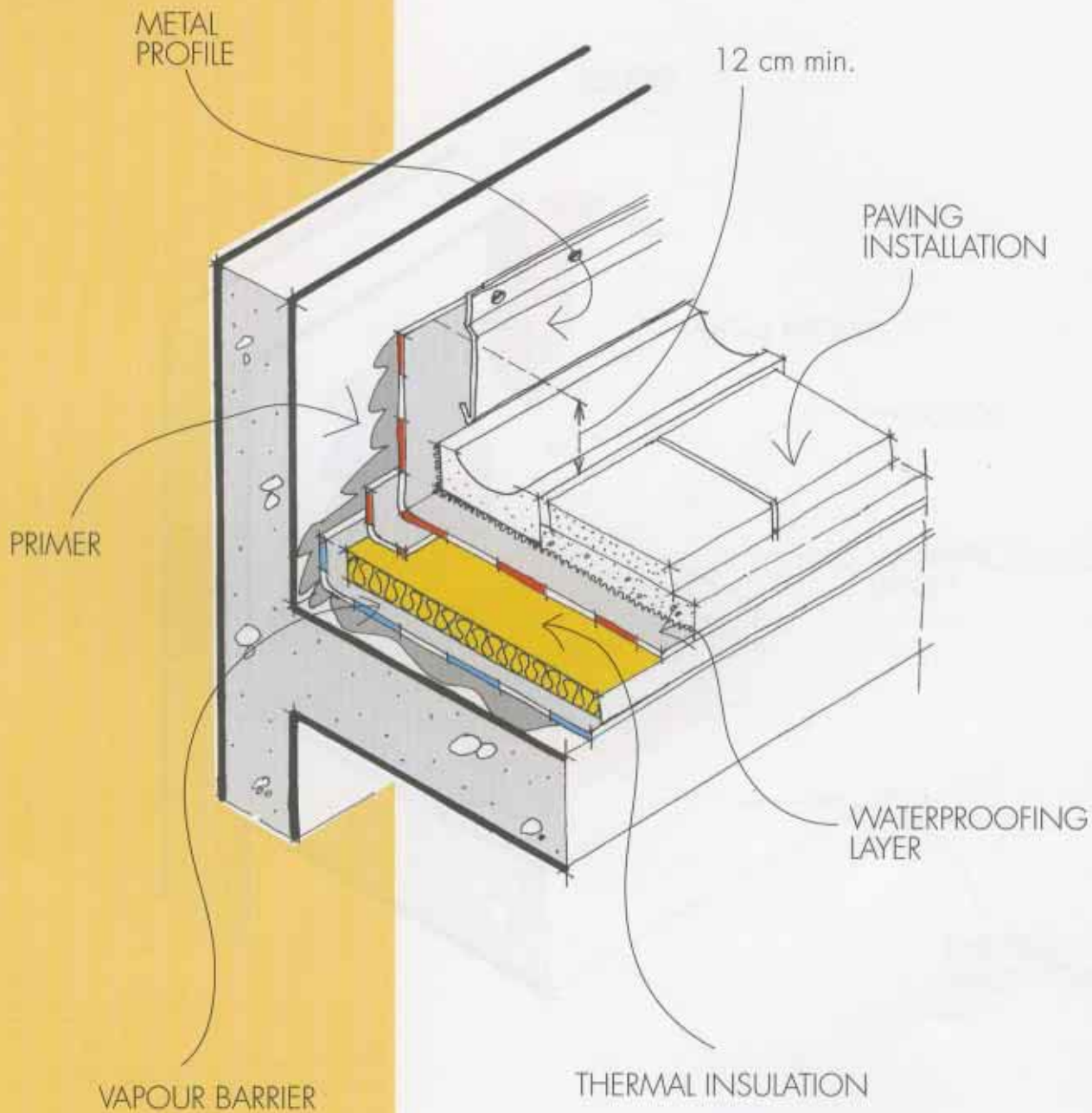


* does not indicate the number of layers.

Job:

Site:

Date:

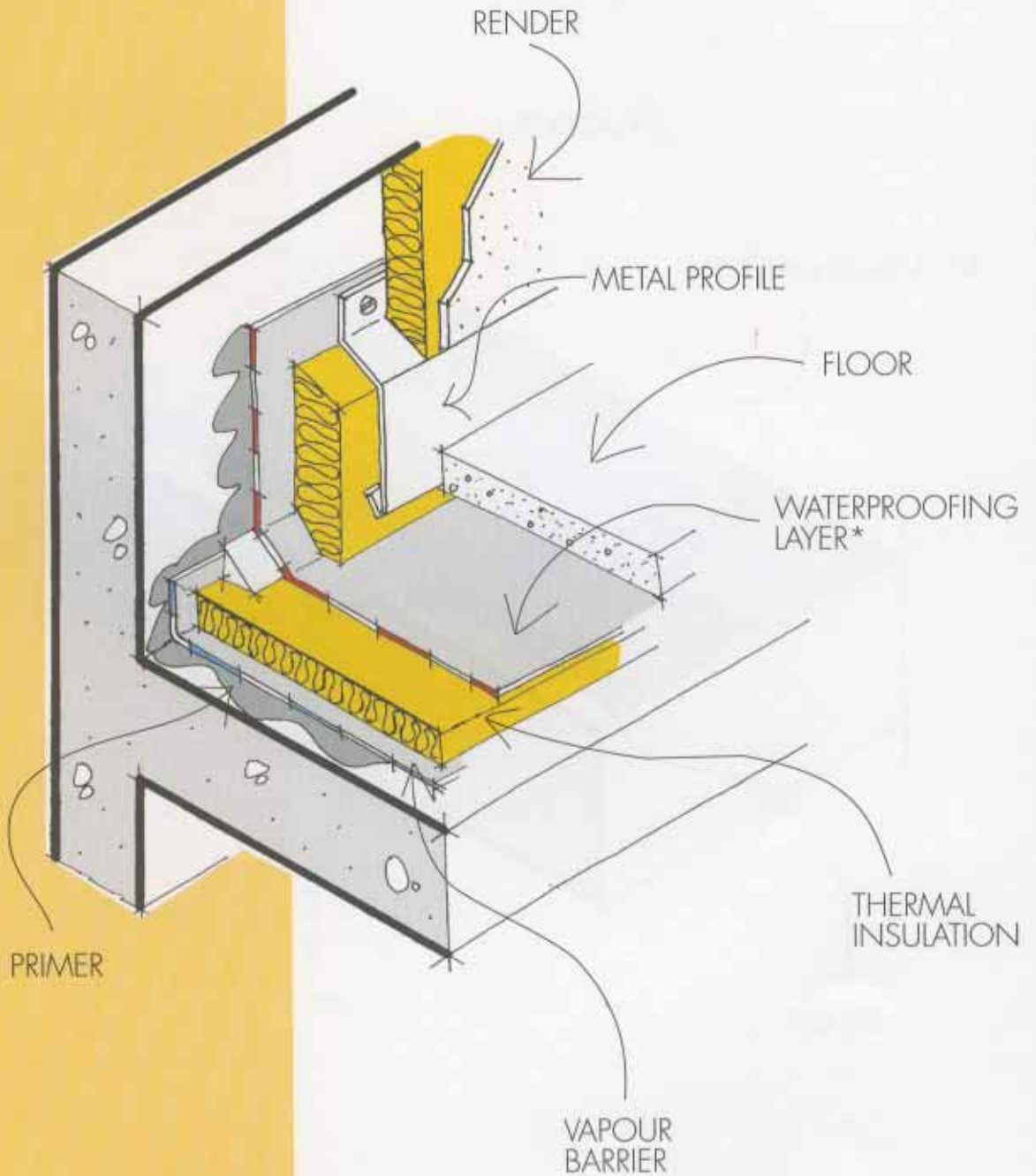


*does not indicate the number of layers.

Job:

Site:

Date:



*does not indicate number of layers.

Job:

Site:

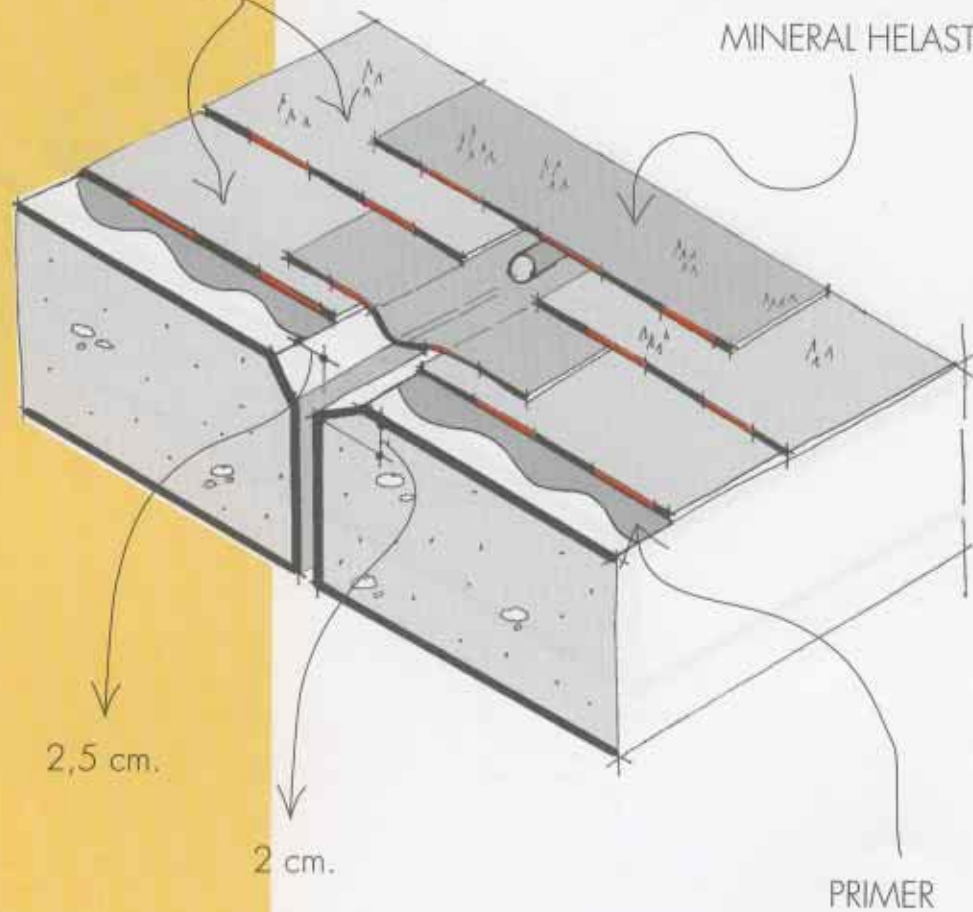
Date:



WATERPROOFING
LAYER

HELASTA/P4

MINERAL HELASTA/P4



2,5 cm.

2 cm.

PRIMER

Job:

Site:

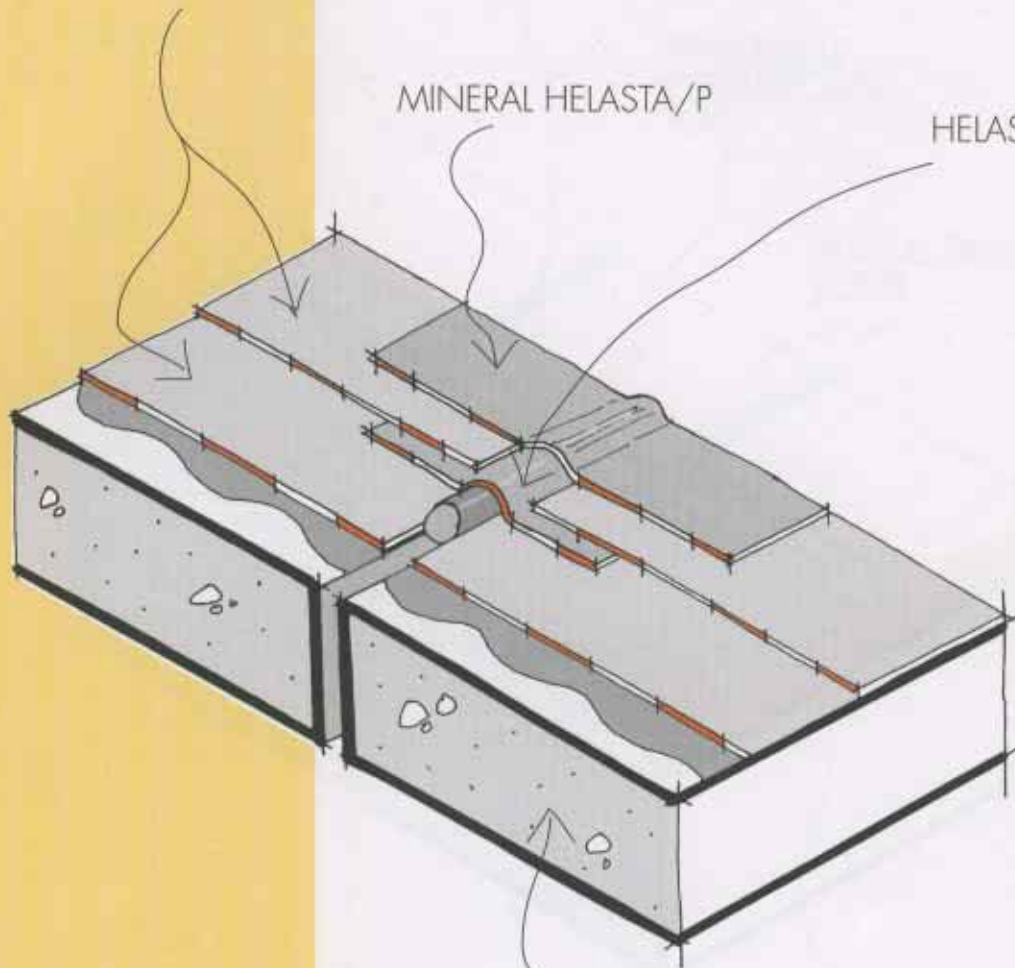
Date:



WATERPROOFING LAYER

MINERAL HELASTA/P

HELASTA/P

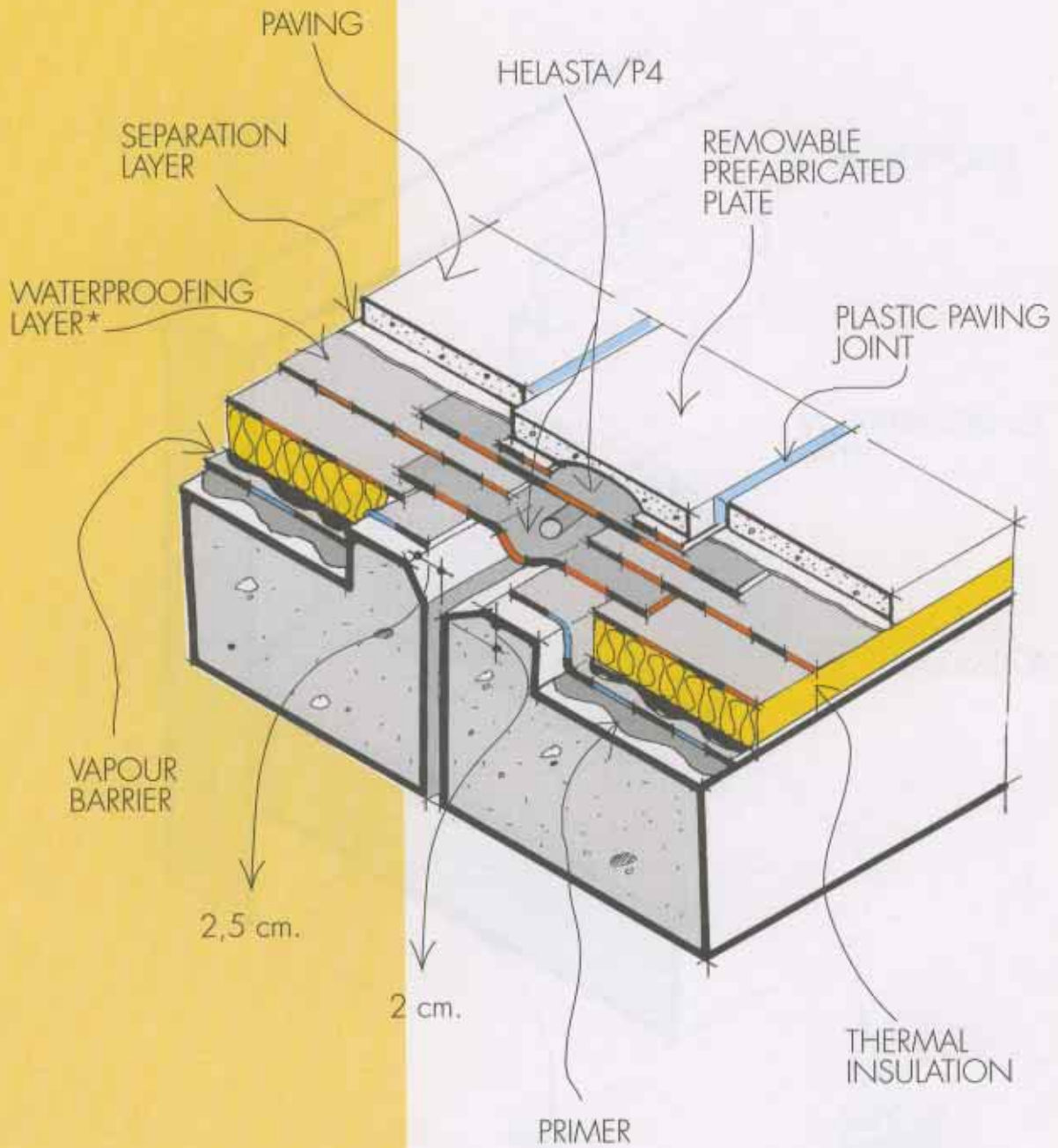


SUPPORT

Job:

Site:

Date:

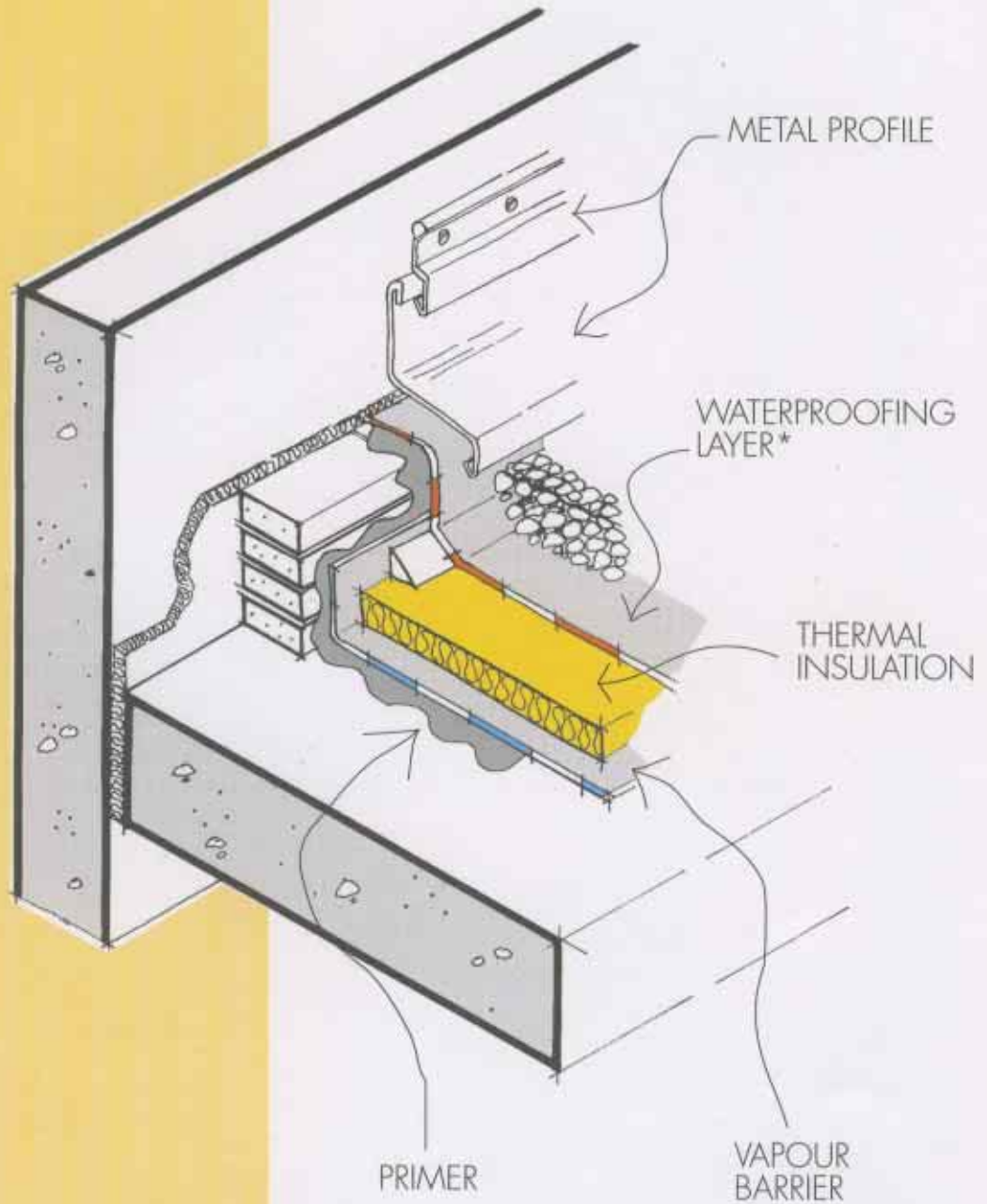


*does not indicate the number of layers.

Job:

Site:

Date:



*does not indicate the number of layers.

Job:

Site:

Date:

specification details



INDEX production uses exclusive industrial patents covering unique processes employed during manufacture.

 Flat roof with access	 Flat roof without access	 Rafters	 Bridges and viaducts	 Foundations	 Anti-seismic foundations	 Metal decks
 Multi-story parking	 Water management	 Roof gardens	 Terraces	 Rehabilitation of exterior masonry walls	 Details	 Under tiles

Company with certified quality system

TOTAL QUALITY
Q.S. 150 9001

